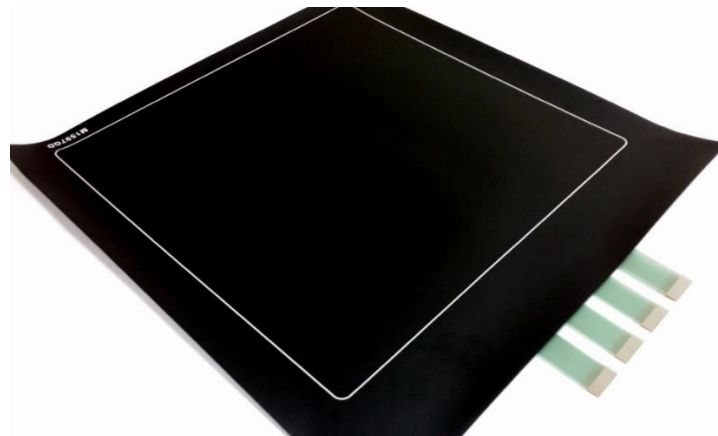


MS9705 LARGE AREA FSR MATRIX ARRAY SENSOR

48X48 ROWS AND COLUMNS / 384MM X 384MM ACTIVE SENSING AREA



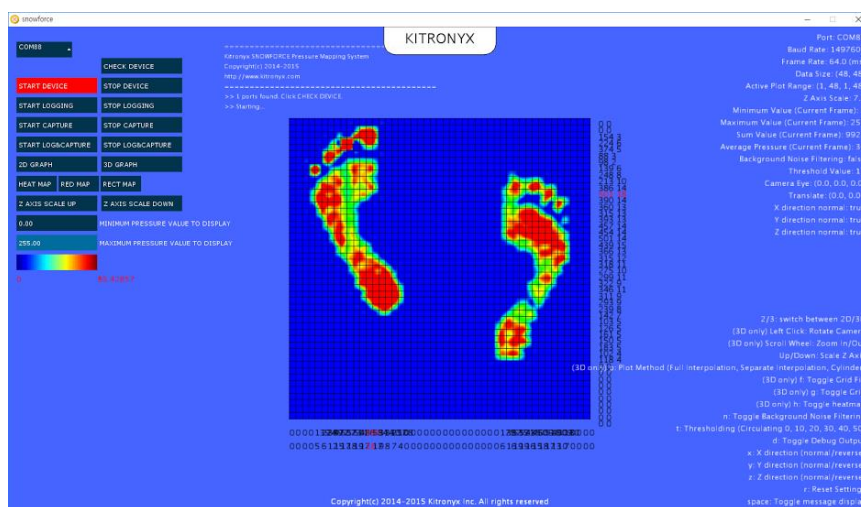
OVERVIEW

MS9705 large area FSR matrix array sensor has 2,304 force sensing nodes by using 48 columns and 48 rows and is designed for true force and multi-touch detection.

Combined with appropriate electronics such as Snowboard2 PLUS + MAB2-48 or MC1600, this sensor can simultaneously detect force applied to each cell. It has an active area of 384X384mm and can be applied to static and dynamic force mapping (pressure distribution measurement), multi-touch, measurement, medical, automotive, etc.

Foot pressure image obtained by using MC1600 and MS9705 (Full Resolution)

- With electronics that fully supports 48 row and 48 columns, this sensor can be used to build a large, high resolution pressure mapping system.



CHARACTERISTICS

Size: 461(W)X479(H) (mm)

Active sensing area: 384X384 (mm)

Sensel size: 8X8 (mm)

Device thickness: 0.91 (mm)

Tail: 49mm Long

Connector: Four bottom contact 1.0mm Pitch 26 way connectors (not included)

Weight: 177g

Matrix type: Shunt

Sensing type: Piezoresistive

Data Acquisition: MC1509 Force Controller for 48x48 FSR Matrix Sensors (not included)

Pressure sensitivity range: 0.25 kgf/cm² ~ 4 kgf/cm²

Total Force Range: 10kg to 100kg

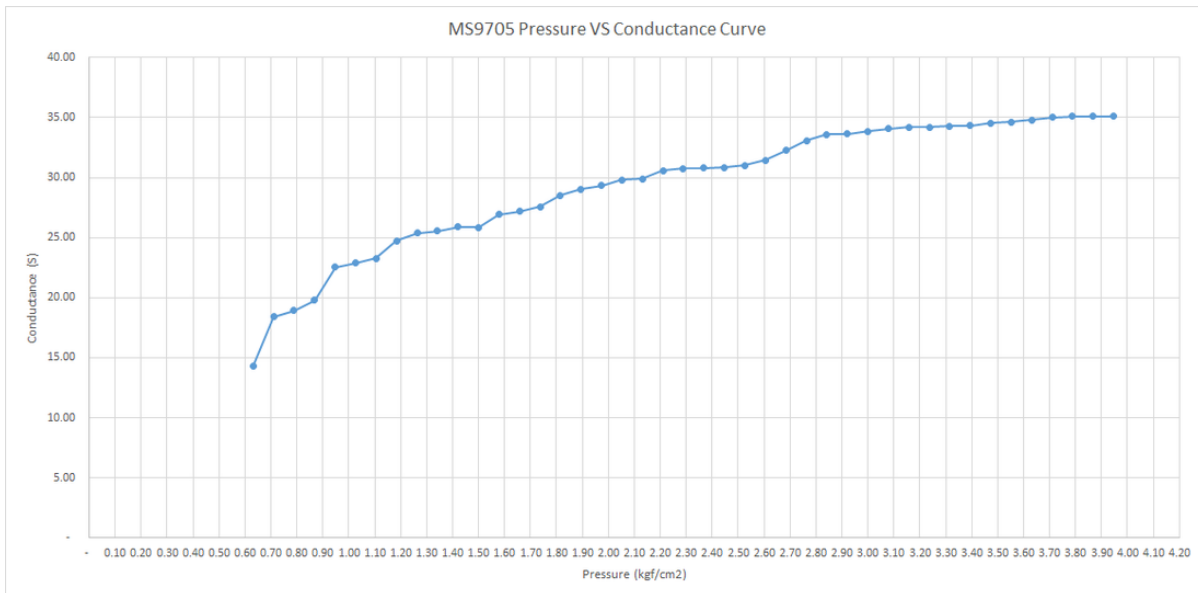
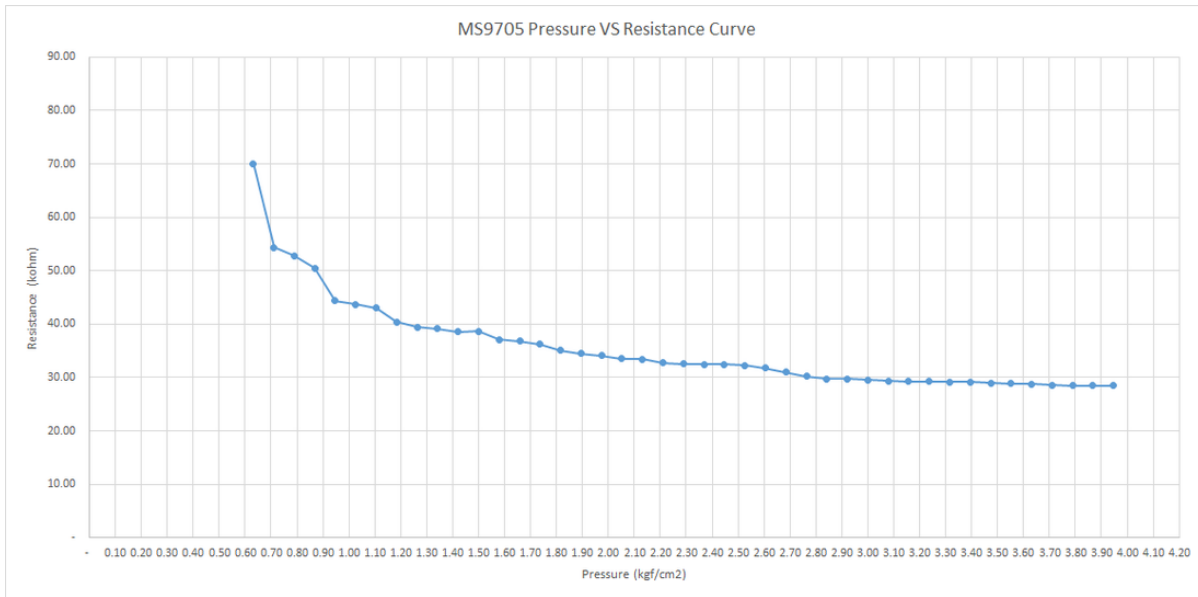
Note 1: Force and pressure range can be changed according to the characteristics of loading object.

Note 2: Sensor output is saturated over force and pressure over indicated sensing range.

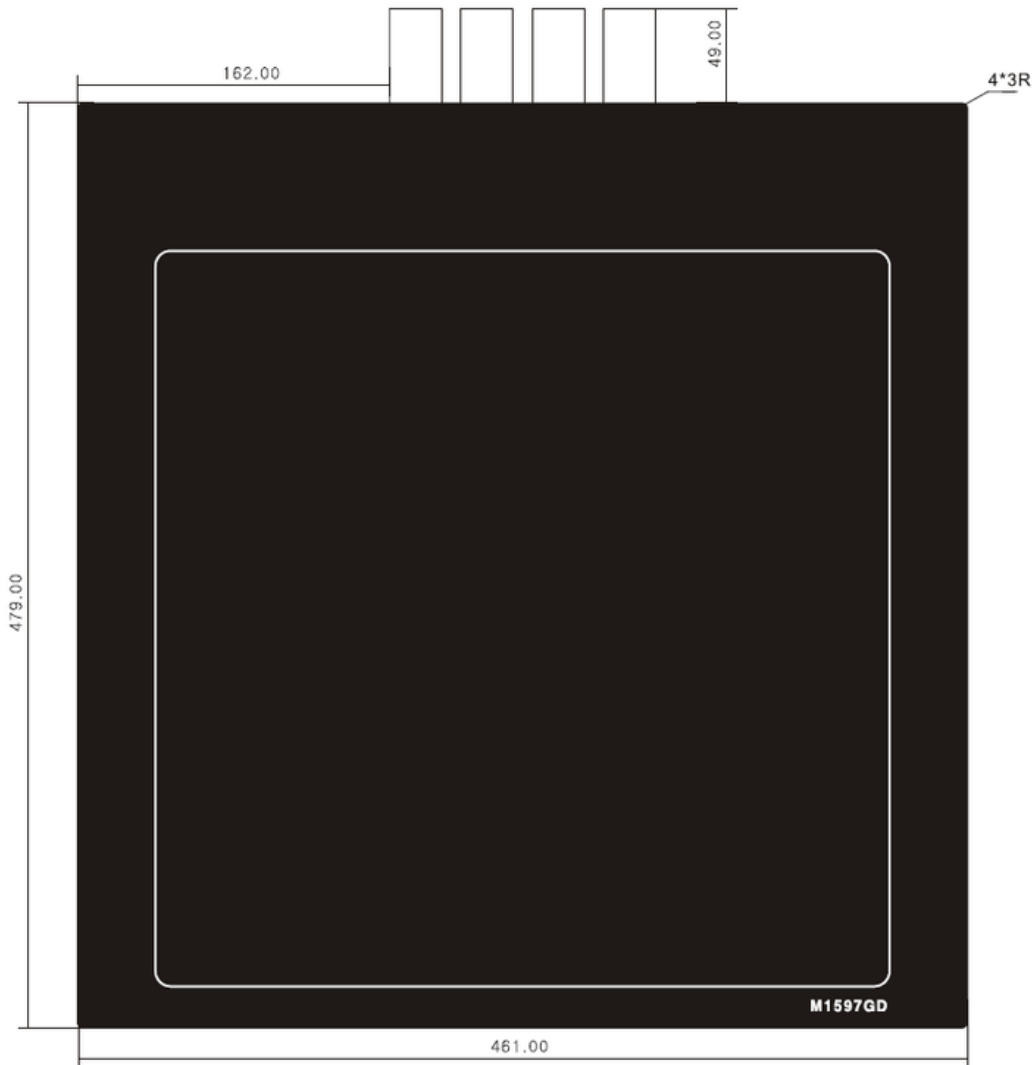
Stand-off resistance: > 10M ohm

Temperature range: - 20.0 ~ 60.0 C

Note: Force and pressure range as well as curves below can be changed according to the characteristics of a loading object.



DIMENSIONS



PIN OUT DIAGRAM

NC means "Not Connected".

